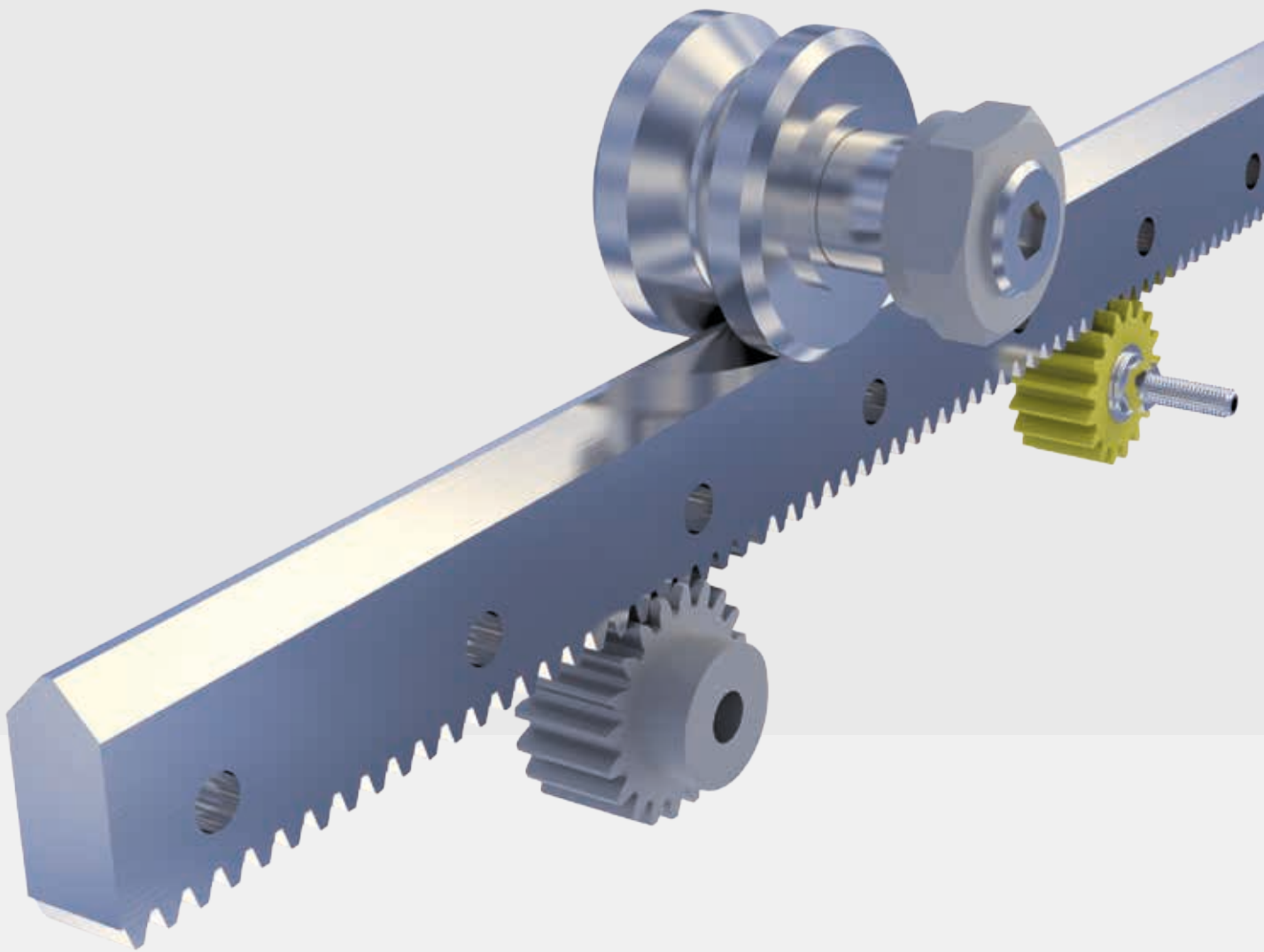


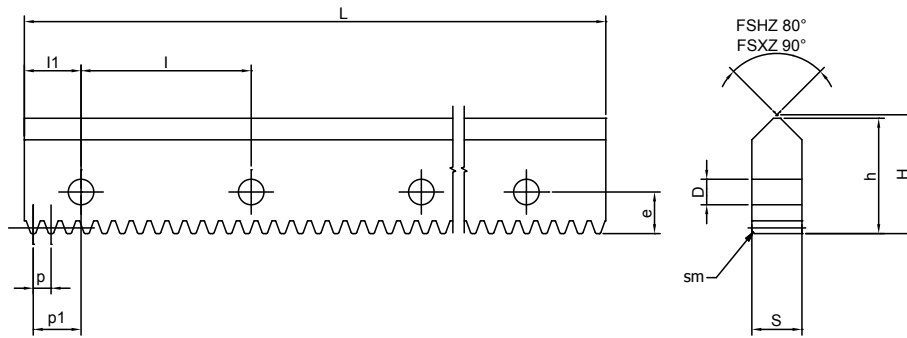
FSHZ FSXZ

with integrated rack



Nadella offers a new guide rail solution with integrated rack transmission: the FSH and FSX profiles with the rack integrated on the bottom of the guide. The standard version provides a drawn and hardened profile with a straight tooth Quality Q10, in three driving sizes: FSHZ52MT, FSHZ72MT and FSXZ90MT. Special versions with grounded profile and helical teeth are also possible.

Guide rail FSHZ FSXZ with integrated rack



Type	H	h	S	Sm x 45°	Module	p Pitch	D	e	l	l1	p1	Drive force ³⁾ (N)	Mass ²⁾ (kg/m)
FSHZ 52 MT	40.75	39.2	13	2	m 1.5	4.712	13.5	17	90	30	27.64	1100	3.6
FSHZ 72 MT	60.85	59.2	19	2	m 2	6.283	17.5	20	90	30	26.86	2100	8
FSXZ 90 MT	62.85	61	26.5	1.5	m 3	9.425	13.5	22	90	30	25.29	4400	11

Max. Length in single element L = 3000 mm (1)

1) Longer rail on request

2) Weight without holes

3) Drive force estimation based on spur gear Z20 and lubricated rack to achieve long rack life. Apply safety factor depending on application type.

RAIL FINISHING TYPE ..MT

- Drawn induction hardened on raceway and sand blasted
- Standard rack type: straight, cut and hardened Quality 10

SPECIAL TYPE ON REQUEST:

- Ground rail ..M
- Induction hardened and ground rack
- Angle rack - special rack on request

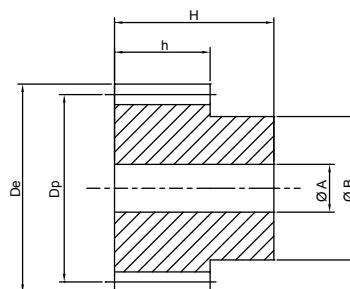
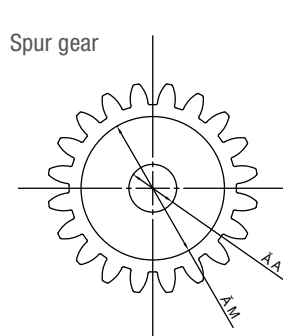
HOLE LAYOUT

- Holes accordingly to catalogue (SB)
- Finished to drawing (NZ)
- Without holes (NF)

Example of standard designation

FSXZ90MT 2300 SB

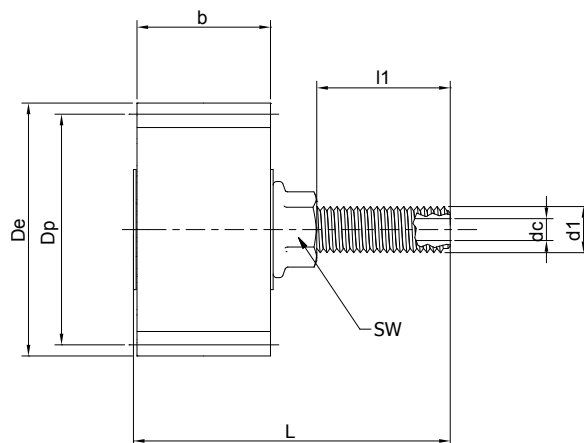
Spur gear



Type		Z	m	De	Dp	h	H	A H7	B	Mass (kg)
PZ20M15HD	Material: C45 Milled teeth Induction hardened	20	m 1.5	33	30	17	30	8	25	0.13
PZ20M20HD		20	m 2	44	40	20	35	10	30	0.26
PZ20M30HD		20	m 3	66	60	30	50	14	45	0.84

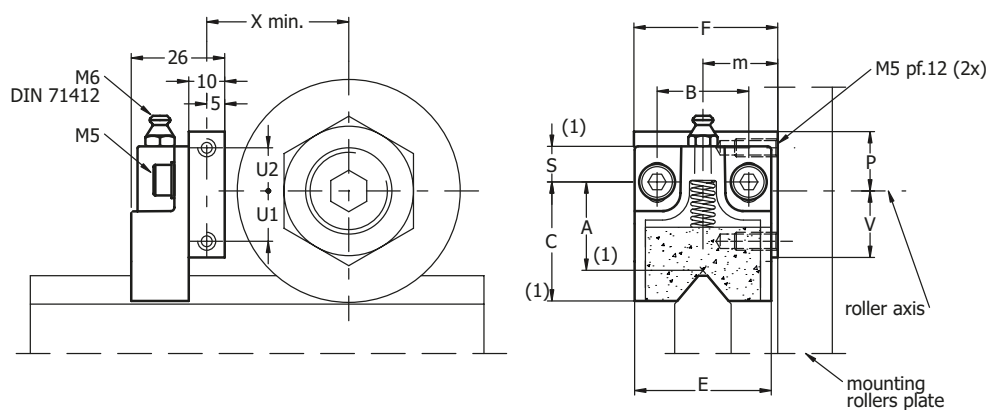
Straight teeth | Pressure angle 20° | Other gear type available on request

Lubrication wheel for the rack



Type		Z	m	De	Dp	b	dc	d1	L	l1	SW	Mass (kg)
LUBZ15D	Material: open cell poliuretane foam	24	m 1.5	39	36	15	M6	M10	60.2	34	17	0.07
LUBZ20D		17	m 2	38	34	20	M6	M10	61	30	17	0.08
LUBZ30D		17	m 3	57	51	30	M6	M10	71	30	17	0.11

Lubricators LUBY and LUBX for the rail

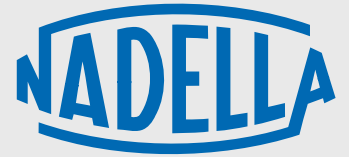


Type	X	U1	U2	F	m	B	S	C	A	E	V	P	Mass (g)
LUBY 52	33.5	12	14	40	19.8	25.5	10	34	24.5	38	16.5	18.5	65
LUBY 72	43.5	19	11	50	27	25.5	10	40	29	44	24	16	85
LUBX 90	52.5	21	9	60	30	30	16.5	45.5	33.5	58	31	19	140

1) The dimension of the plastic part refers to the centre of the regulation slot. The regulation slot allows a translation of +/-3 mm.

2) The lubricator is supplied with the felt already lubricated. The lubricant has a mineral oil base.

3) During the mounting fix the aluminium support to the rollers plate, adjust the height of the plastic part in order to put in contact with the raceways and then block it in that position with the M5 screws.



NADELLA S.r.l.
Italy
Via Melette, 16
20128 Milano

Tel.: +39 02 27 093 297
Fax: +39 02 25 51 768
customer.service@nadella.it

www.nadella.it

NADELLA GmbH
Germany
Rudolf-Diesel-Str. 28
71154 Nufringen

Tel.: +49 7032 9540-0
Fax: +49 7032 9540-25
info@nadella.de

www.nadella.de

NADELLA Linear Shanghai Co. Ltd.
China
No. 3456 South Pudong Road -
Shanghai 200125

Tel.: +86 21 5068 3835
Fax: +86 21 5038 7725
info@nadella.cn.com

www.nadella.cn.com

NADELLA Inc.
USA
14115 - 63 Way North
Clearwater - Florida 33760-3621

Toll free: + 1 844-537-0330
Fax: + 1 844-537-0331
info@nadella.com

www.nadella.com

