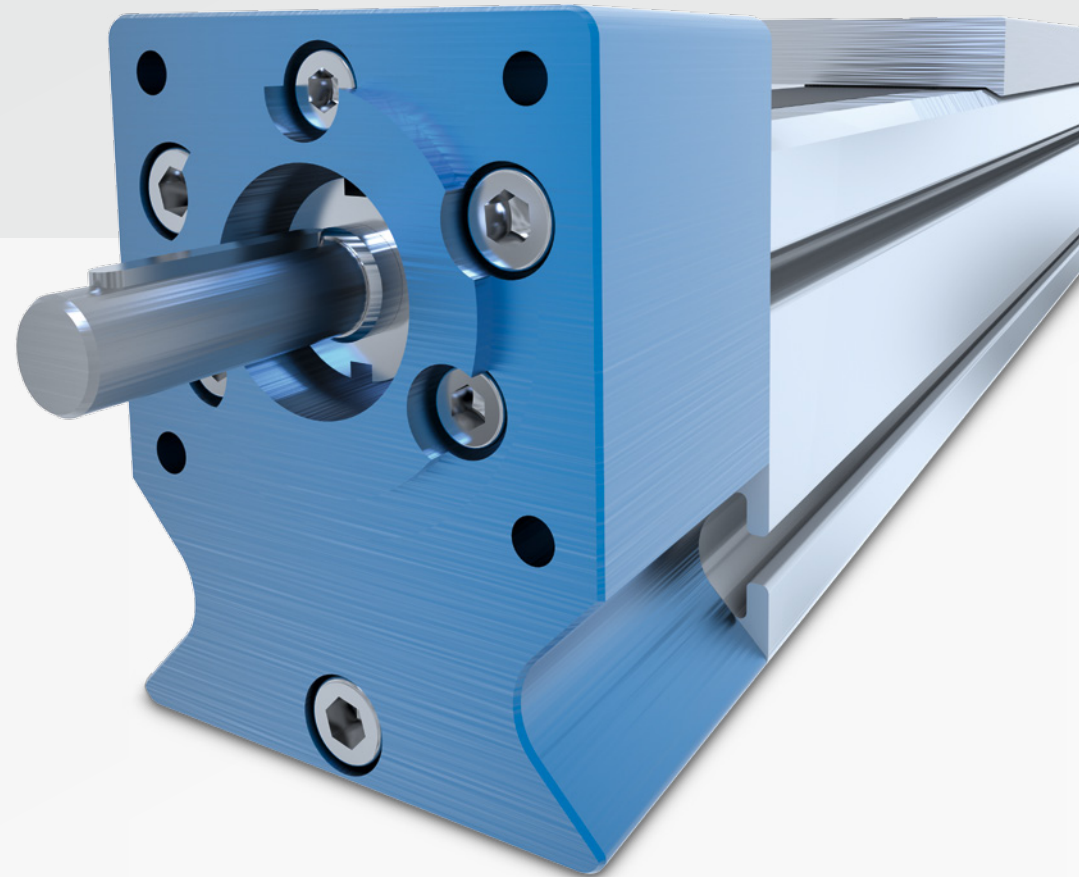




Linear and Motion Solutions

# PRODUCT PROGRAM



# PERFORMANCE AND KNOW-HOW

The NADELLA Group is today an absolute specialist for mechanical motion technology, offering you numerous products, the appropriate know-how and service for this purpose. Let NADELLA's performance convince you.

## NADELLA SALES ORGANISATION

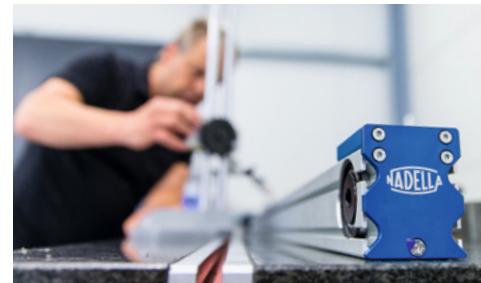
- Local technical consultation by our sales engineers
- Project support and assistance
- Free training courses and presentations for our customers
- Friendly contacts in specialised sales teams
- Worldwide export and spare-parts supply

## ENGINEERING AND RESEARCH DEPARTMENT

- Innovative product development orientated to the market
- Customer consultation and application-orientated solution proposals
- CAD drawings available on websites
- Endurance calculations and installation recommendations
- In-house test and inspection equipment for reliable products

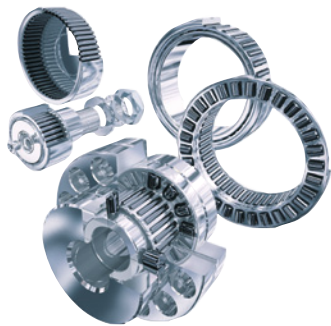
## PRODUCTION

- Production of cam followers and guide rollers
- Manufacturing of guide rails in aluminium and steel
- Quality assurance, testing and measurement of components
- Assembly and adjustment of guide carriages
- Production and assembly of linear axes
- Assembly of rail guide systems



# THE RIGHT SOLUTION FOR ANY REQUIREMENT!

## NEEDLE BEARINGS



- Full complement needle roller bearing cam followers and support rollers with outer diameter up to 300 mm (11.8")
- Thrust bearings with thrust plate with bore diameter from 5 to 240 mm (0.20 to 9.4")
- Combined radial and thrust needle bearings as needle bushings or as precision bearings for high loads
- Full complement and caged needle bushings and needle bearings up to 300 mm (11.8") bore size

## CAM FOLLOWERS



- Thick-walled cylindrical or crowned outer ring
- Versatile use in gearboxes and for linear movements
- Broad range of standard rollers and application-specific drawing parts
- Special materials and corrosion-resistant versions

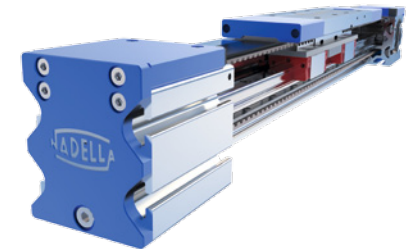
## ROD ENDS AND SPHERICAL-PLAIN BEARINGS

### DURBAL



- With roller or ball bearing version from 6 to 40 mm (0.24 to 1.6")
- With sliding bearings, maintenance free (DURBAL Glide) or maintenance required from 5 to 1000 mm (0.20 to 39.4")
- For custom made system solutions and, on request, special products according to drawing
- In aluminium or stainless steel version or with special coating (DURBAL Coat)
- For hydraulic cylinders with female thread or for welding

## LINEAR MODULES



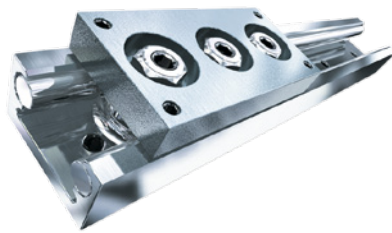
- Drive with toothed belt or ball screw drive
- For high speeds and high precision requirements
- Speed up to 10 m/s (33 ft/s)
- Overall length up to 12 m (39 ft)
- Loads up to 250 kg (551 lbs)
- Broad product range for all applications
- All options for simple assembly of multi-axis systems

## LINEAR GUIDE SYSTEMS



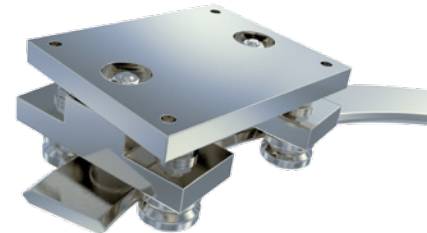
- Steel rails for medium and high loads
- V-Line with many sizes and variants for all applications
- Multi-Motion-Line for straight and curved motions
- Heavy-Line for high loads and harsh environments
- Rolbloc for loads up to 60 metric tons (59 long tons) and robust applications

## LINEAR GUIDE SYSTEMS



- Aluminium-steel rails for small and medium loads
- Base-Line as proven and versatile entry-level series
- Flexi-Line in dimensions according to DIN 645
- U-Line with inside carriage and compact rail dimensions
- C-Line, the combination for all applications

## MULTI-MOTION-LINE



- Circular rails based on V-Line profiles
- Guide rings, guide and circular rails
- Standard radii with short delivery times
- Available in stainless steel

## TELESCOPIC-LINE



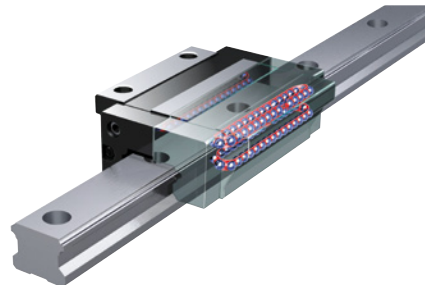
- Sturdy and robust telescopic guides in mechanical engineering quality
- For loads from 10 up to 1000 kg (22 to 2205 lbs)
- Corrosion protection with coatings and stainless-steel versions
- Special versions and special functions, end damping, locks and locking pins, etc.

## BALL SCREW DRIVES



- Complete program for all applications
- Ground precision screw drive IT2 to IT5
- Ball screw drive according to JIS standard/ DIN
- Diameter 6 to 160 mm (0.24 to 6.3")
- Standard program and custom production according to drawing
- Bearings for ball screw drives and adjusting nuts

## LM SYSTEM



- Linear technology form the technological and world market leader
- THK Caged Ball technology
- Highly economical and maintenance-free over the long term
- Linear guides, miniature guides, curve guides
- Compact modules and cross roller bearings
- Torque shafts and slotted-shaft guides
- Good availability from Nufringen warehouse

## PROFILE RAIL GUIDES



- Quality and precision from a leading manufacturer
- Made in Germany and Switzerland
- MONORAIL in sizes 15 to 45
- MINIRAIL in sizes 7 to 42
- MINISCALE miniature guides with integrated measuring system
- Accessories exchangeable and retrofittable
- Assembled on a custom made basis and available promptly

## ACTUATORS



- For all loads that are pulled, pushed, lifted or lowered
- Electric drive
- Environmentally friendly and clean – no leakage
- Maintenance free
- Simple installation, wiring and assembly
- Robust and reliable

# WORLDWIDE NETWORK FOR IDEAL SERVICE



WE CAN BE FOUND WORLDWIDE AT:  
[WWW.NADELLA-GROUP.COM](http://WWW.NADELLA-GROUP.COM)

## NADELLA HEAD OFFICE

NADELLA S.r.l.  
Italy  
Via Melette, 16  
20128 Milano

Tel.: +39 02 27 093 297  
Fax: +39 02 25 51 768  
[customer.service@nadella.it](mailto:customer.service@nadella.it)

[www.nadella.it](http://www.nadella.it)

NADELLA GmbH  
Germany  
Rudolf-Diesel-Str. 28  
71154 Nufringen

Tel.: +49 7032 9540-0  
Fax: +49 7032 9540-25  
[info@nadella.de](mailto:info@nadella.de)

[www.nadella.de](http://www.nadella.de)

NADELLA Inc.  
USA  
14115 – 63 Way North  
Clearwater – Florida 33760-3621

Toll free: +1 844-537-0330  
Fax: +1 844-537-0331  
[info@nadella.com](mailto:info@nadella.com)

[www.nadella.com](http://www.nadella.com)

NADELLA Linear Shanghai Co. Ltd.  
China  
No. 3456 South Pudong Road –  
Shanghai 200125

Tel.: +86 21 5068 3835  
Fax: +86 21 5038 7725  
[info@nadella.com](mailto:info@nadella.com)

[www.nadella.cn.com](http://www.nadella.cn.com)

## DURBAL HEAD OFFICE

DURBAL Metallwarenfabrik GmbH  
Germany  
Verrenberger Weg 2  
74613 Öhringen

Tel.: +49 7941 9460-0  
Fax: +49 7941 9460-90  
[info@durbal.de](mailto:info@durbal.de)

[www.durbal.de](http://www.durbal.de)