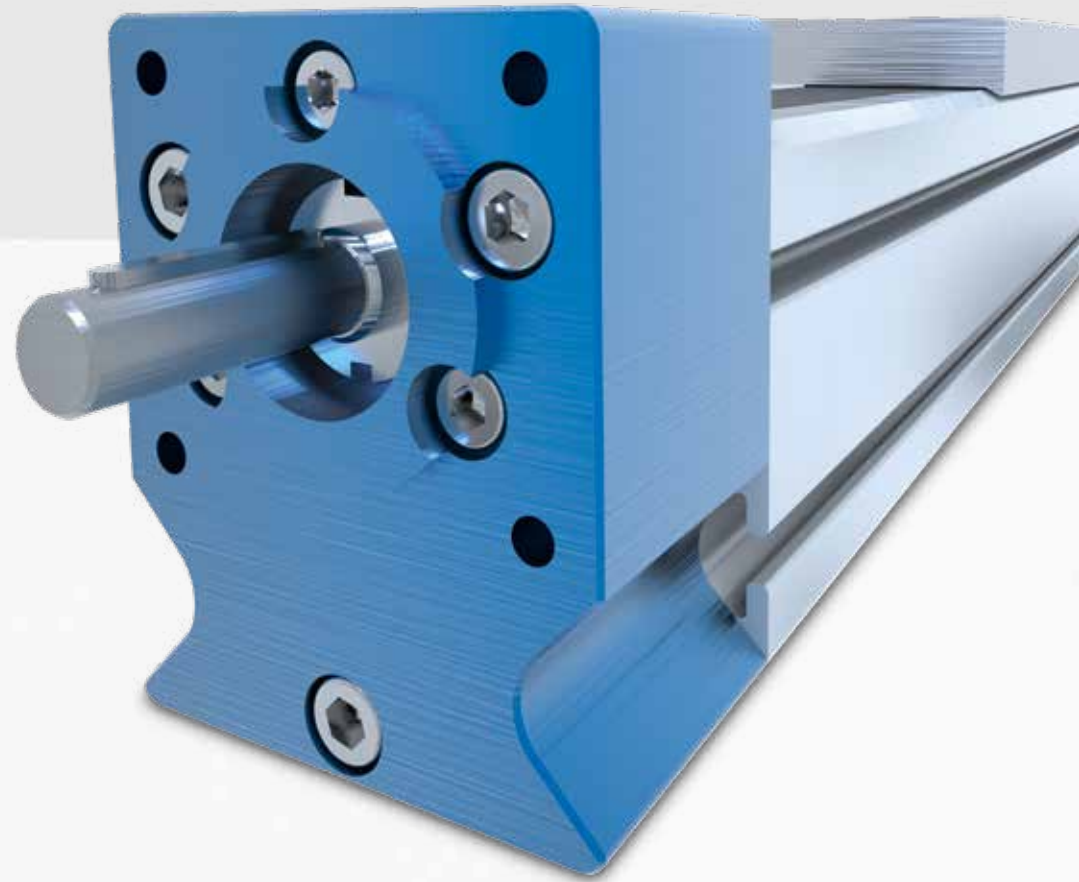


# PRODUCT PROGRAM



# PERFORMANCE AND KNOW-HOW

The NADELLA Group is today an absolute specialist for mechanical motion technology, offering you numerous products, the appropriate know-how and service for this purpose. Let NADELLA's performance convince you.

## NADELLA SALES ORGANISATION

- Local Sales Representatives
- Application Engineering Support
- Local Warehousing & Assemble
- Fast and Competitive Quotes
- Worldwide Sales and Customer Support

## ENGINEERING AND RESEARCH DEPARTMENT

- Innovative and Flexible Product Designs
- Product Solutions that meet Customer requirements
- CAD Drawing available on Websites
- Free Application Engineering Support
- In-House Test and Inspection Equipment

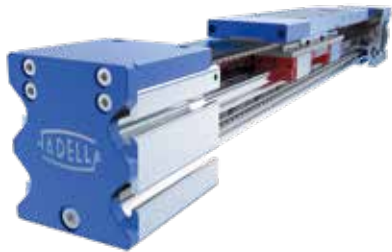
## MANUFACTURING AND RESEARCH

- Production of Cam followers and Guide Rollers
- Manufacturing of Guide Rails in Aluminum, Steel and Stainless Steel
- Standard and Customized Products
- Inch and Metric Dimensions Available
- Fast Pick & Ship or to Order Assemblies
- All products meet ISO 9001 / 14001



# THE RIGHT SOLUTION FOR ANY REQUIREMENT

## LINEAR MODULES



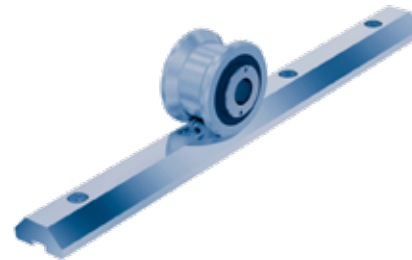
- Drive with toothed belt or ball screw
- Light to medium load applications
- Robust roller bearing and ball rail version
- Speed up to 10 m/s (33 ft/s)
- Strokes of up to 12000 mm / 40ft
- Gearbox configurations available
- Steel reinforced AT belt
- Belt covers
- Steel pulleys for longer life

## ROLBLOC BL AND BL..DS



- Medium to heavy load applications
- 3 Sizes available
- Linear speed 4 m/s (13 ft/s)
- Metal seals for harsh environments
- Rails up to 6000 mm / 20 ft length
- Machined or ground rails
- Complete kit assemblies

## HEAVY-LINE GU GUIDES



- For medium to heavy load applications
- Tapered roller bearings
- Harden steel or stainless steel rails
- Cold drawn profiles
- Speed up to 10 m/s (32 ft/s)
- Linear accuracy 0.5 mm/m (0.019" / 3 ft)
- Rail length up to 6000 mm / 20 ft length
- Optional lubricators and wipers
- 3 Sizes available & joinable rails

## V-LINE FS AND FSH GUIDES



- Induction-hardened steel or stainless steel rails
- Linear accuracy 0.5 mm/meter
- Low noise and vibration
- Speed up to 4 m/s (13 ft/s)
- Rails up to 6000 mm / 20 ft length
- Double or single sided rails
- 9 Sizes available
- Cold drawn or ground surfaces
- 3 Different bearing types available

### MULTI MOTION LINE CIRCULAR GUIDES



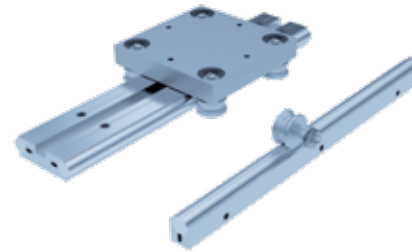
- Circular rails based on V-Line profiles
- Standard and custom radius
- Steel or stainless steel systems
- Fixed or pivoting carriages
- Nickel plating available
- 3 sizes available
- Easy joining & mounting hardware
- Ground surfaces

### C-LINE LS GUIDES



- For moderate load applications
- Self-aligning system
- High speed up to 8 m/s (26 ft/s)
- Acceleration up to 20 m/s<sup>2</sup> (65 ft/s<sup>2</sup>)
- Self-lubrication & wipers
- 3 Sizes available
- Rails up to 6000 mm / 20ft length
- In zinc or nickel plating
- Short & long slider

### BASE-LINE C AND DC GUIDES



- For light and medium load applications
- Low profile design & easy mounting
- Corrosion resistant materials
- Lightweight aluminum body
- Harden steel or stainless steel shafts
- Rails up to 6000 mm / 20ft length
- Up to 10 m/s (32 ft/s) speed
- Self-lubrication and wipers avail

### U-LINE LM GUIDES



- For light and medium load applications
- Compact U-profile with inside carriage
- Corrosion resistant materials
- Self-alignment system
- Linear accuracy 0.5 mm/meter
- Rails up to 6000 mm / 20ft length
- 6 sizes available
- Up to 10m/s (32 ft/s) speed
- Joinable rails

## TELESCOPIC LINE



- Moderate to heavy load applications
- Partial and full extension strokes
- Loads from 10 up to 1000 kg (22 to 2200 lbs)
- Steel or stainless steel available
- Soft stops, locking devices and wipers
- Up to 2500 mm / 8ft strokes
- Standard and custom made products

## NEEDLE BEARINGS



- Light to heavy load applications
- Sizes up to 300 mm / 12"
- Smallest sizes in industry
- Needle bearing full complement or caged
- Highest precision on market
- Patented thrust bearing with retainer plate for kit assembly
- Combined bearing in 2-piece version
- Complete kit assemblies or just bushings and needles

## CAM FOLLOWER AND TRACK ROLLERS



- Light to heavy load applications
- Sizes from 5 to 320 mm / 0.19" to 12.6"
- Concentric and eccentric versions
- Double CAM and custom designs
- Metal seals for harsh environments
- Steel and stainless Steel systems
- Complete kit assemblies
- Two different bearing configurations
  - Needle Bearing
  - Taper Roller Bearing

## ROD ENDS AND SPHERICAL-PLAIN BEARINGS

### DURBAL



- With roller or ball bearing version from 6 to 40 mm (0.24 to 1.6")
- With sliding bearings, maintenance free (DURBAL Glide) or maintenance required from 5 to 1000 mm (0.20 to 39.4")
- For custom made system solutions and, on request, special products according to drawing
- In aluminium or stainless steel version or with special coating (DURBAL Coat)
- For hydraulic cylinders with female thread or for welding

# WORLDWIDE NETWORK FOR IDEAL SERVICE



WE CAN BE FOUND WORLDWIDE AT:  
[WWW.NADELLA.COM](http://WWW.NADELLA.COM)

## NADELLA HEAD OFFICE

NADELLA S.r.l.  
Italy  
Via Melette, 16  
20128 Milano

Tel.: +39 02 27 093  
Fax: +39 02 257 64 79  
customer.service@nadella.it

[www.nadella.it](http://www.nadella.it)

NADELLA GmbH  
Germany  
Rudolf-Diesel-Str. 28  
71154 Nufringen

Tel.: +49 7032 9540-0  
Fax: +49 7032 9540-25  
info@nadella.de

[www.nadella.de](http://www.nadella.de)

NADELLA Inc.  
USA  
14115 – 63 Way North  
Clearwater – Florida 33760-3621

Toll free: +1 844-537-0330  
Fax: +1 844-537-0331  
info@nadella.com

[www.nadella.com](http://www.nadella.com)

NADELLA Linear Shanghai Co. Ltd.  
China  
Room D314, NO.245 Xinjunhuan  
Road 201114 Minhang Shanghai

Tel.: +86 21 5068 3835  
info@nadella.cn.com

[www.nadella.cn.com](http://www.nadella.cn.com)

## DURBAL HEAD OFFICE

DURBAL Metallwarenfabrik GmbH  
Germany  
Verrenberger Weg 2  
74613 Öhringen

Tel.: +49 7941 9460-0  
Fax: +49 7941 9460-90  
info@durbal.de

[www.durbal.de](http://www.durbal.de)